



## 27<sup>th</sup> International Meeting of Combined Events

I.A.A.F. WORLD COMBINED EVENTS CHALLENGE 2014

FIRENZEATLETICA International Meeting

Firenze (Italy) "L. Ridolfi" Stadium - May 2<sup>th</sup> - 3<sup>th</sup>, 2014

Name: **Chantae Mc MILLAN**

Country: U. S. A

Date of birth: 1 May 1988

Place of birth: Rolla, MO

Profession: Student

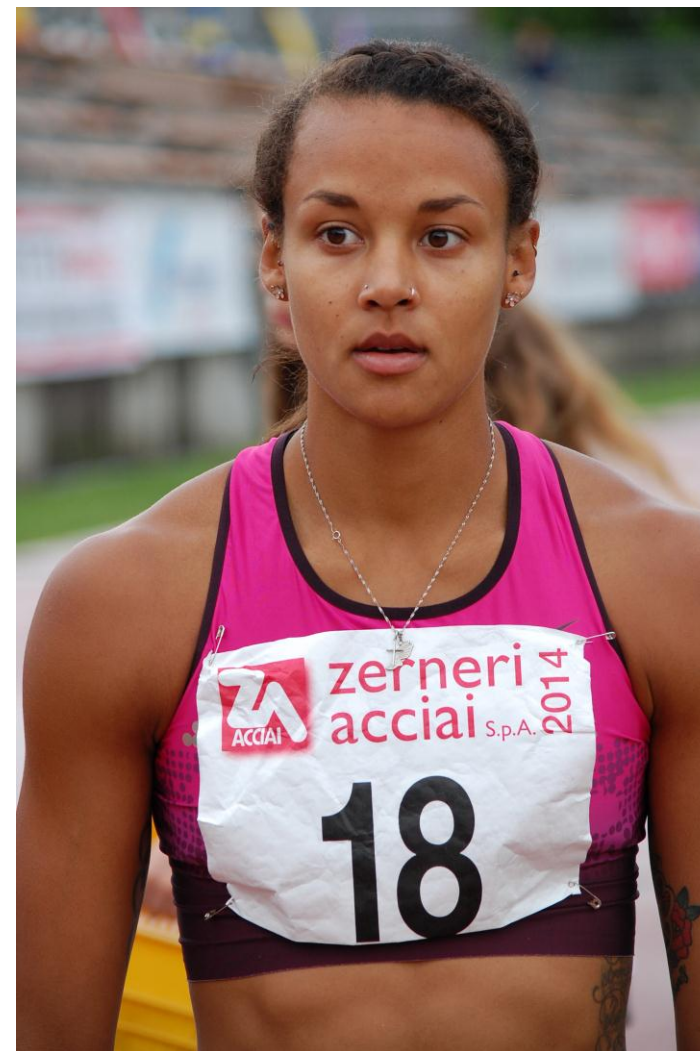
Club: Nebraska University

Height: 1,70

Weight: 59

Personal best:				Best results:
Heptathlon	6.188	Eugene	30.06.12	Olympic games: 29 2012
100 m. hurdles	13.36	Eugene	0,7 29.06.12	
High jump	1.75	Columbia	14.05.10	
Shot put	15.02	Eugene	29.06.12	
200 m.	24.90	Bouder	0,0 16.05.08	
	24.32w	Eugene	3,0 29.06.12	
Long jump	6.30	Azusa	1,9 14.04.11	
	6.33i	College St.	1.03.11	
Javelin throw	50.24	Eugene	30.06.12	
800 m.	2.17.71	Eugene	30.06.12	
1st day	3.762	Eugene	29.06.12	
2nd day	2.501	Eugene	26.06.11	
60 m.	7.95i	Lincoln	22.01.11	
60 m. hurdles	8.52i	Lincoln	25.02.11	

Personal best heptathlon:	13.36	1.72	15.02	24.32	5.52	50.24	2.17.71
	1071	879	862	950	706	865	855
	1071	1950	2812	3762	4468	5333	6188
Total points with personal best:	13.36	1.75	15.02	24.32	6.33	50.24	2.17.71
	1071	916	862	950	953	865	855
	1071	1987	2849	3799	4752	5617	6472



Career:

5226w	3)	LAWRENCE	17.04.08	KANSR	14.60	1.62	11.81	25.38	5.76w	36.90	2.30	53	2,5	2,5	5,4
5444	2)	BOULDER	17.05.08	BIG12	14.46	1.60	11.66	24.90	5.99	41.60	2.28	27	-1,4	0,0	-0,3
5261	22)	DES MOINES	14.06.08	NCAA	14.18	1.60	10.93	25.31	6.09	33.33	2.29	04	1,9	0,6	0,8
5349	1)	COLUMBIA	15.05.10	BIG12	14.41	1.75	13.70	26.23	5.59	41.62	2.43	13	1,4	0,5	0,8
5583	4)	EUGENE	10.06.10	NCAA	14.43	1.66	14.25	25.90	5.71	41.95	2.23	65	1,0	1,8	-0,9
5822	2)	AZUSA	14.04.11	MTSAC	13.87	1.61	13.61	25.48	6.30	45.53	2.25	55	1,8	2,2	1,9
5951	1)	NORMAN	14.05.11	BIG12	13.81	1.64	14.18	24.92	6.20	43.39	2.20	32	3,1	0,0	2,6
dnf	-)	DES MOINES	9.06.11	NCAA	13.91	nm	dns						2,1		
6003	3)	EUGENE	26.06.11	NC	13.93	1.66	14.75	25.25	6.18	47.58	2.22	99	1,2	1,6	-1,7
dnf	-)	CHULA VISTA	14.08.11	THORPE	13.89	1.69	dns						1,8		
6188	3)	EUGENE	30.06.12	NC	13.36	1.72	15.02	24.32	5.52	50.24	2.17	71	0,7	3,0	1,6
dnf	-)	MARBURG	22.07.12	THORPE	13.78	1.68	dns						1,0		
5688	29)	LONDON	4.08.12	OG	13.49	1.68	14.92	25.25	5.37	49.78	2.40	55	0,9	0,3	-1,2
3735	17)	DES MOINES	25.04.13	DRAKER	14.42	1.57	nm	dnf	5.18	44.40	2.25	32	-3,9		1,4
dnf	-)	DES MOINES	20.06.13	NC	14.03	1.66	13.51	25.96	dns				2,7	1,0	

Indoor

3827	3)	LINCOLN	29.02.08	BIG12	9.11	1.63	12.25	5.84	2.30	21					
3996	2)	LINCOLN	7.02.09	HUSKER	8.83	1.70	12.33	5.88	2.29	48					
4061	2)	COLLEGE STATION	27.02.09	BIG12	8.91	1.70	13.17	5.90	2.27	90					
4096	8)	COLLEGE STATION	14.03.09	NCAA	8.77	1.66	12.30	6.14	2.24	97					
dnf	-)	LINCOLN	30.01.10	HUSKER	dnf	1.63	12.64	dns							
4151	1)	LINCOLN	27.02.10	BIG12	8.86	1.64	14.45	6.02	2.25	58					
dnf	-)	FAYETTEVILLE	13.03.10	NCAA	8.91	1.65	13.25	dns							
4371	1)	LINCOLN	4.02.11		8.63	1.70	14.44	6.29	2.23	91					
4287	1)	LINCOLN	25.02.11	BIG12	8.52	1.70	14.39	6.12	2.28	49					
4396	3)	COLLEGE STATION	11.03.11	NCAA	8.69	1.66	14.57	6.33	2.19	61					