

23th International Meeting of Combined Events

I.A.A.F. WORLD COMBINED EVENTS CHALLENGE 2010

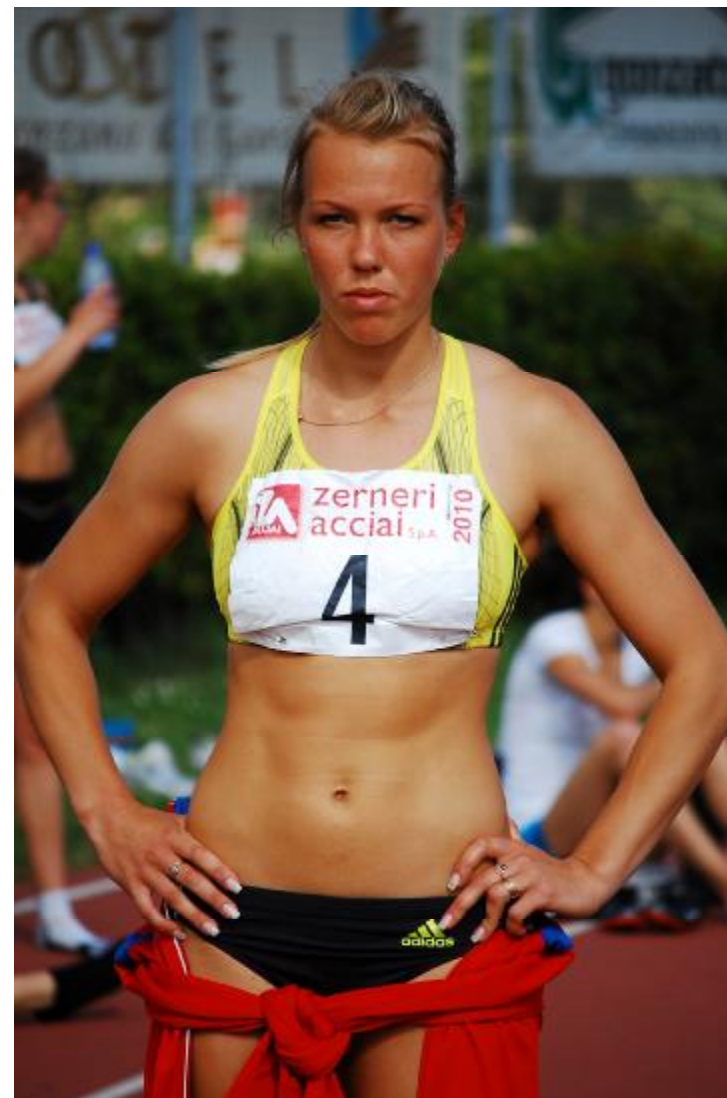
TROFEO "CITTA' DI DESENZANO DEL GARDA"(BS) - ITALY

Desenzano del Garda (Italy) "F. Ghizzi" Stadium - May 8th - 9th, 2010

Name: **Nadezhda SERGEYEVA**
 Country: Russia
 Date of birth: 13 June 1987
 Place of birth: Kemerovo
 Club: Lokomotiv
 Coach: Anatoliy Karnashevich - Anatoliy Verlan
 Height: 1,77
 Weight: 68

Personal best:		Best results:	
Heptathlon	6.118 Kaunas	19.07.09	European cup: 6 2009
100 m hurdles	14.04 Kaunas	-0,2 18.07.09	European junior championships: 4 2005
High jump	1.80 Kaunas	18.07.09	European U23 championships: 3 2009
Shot put	14.60 Kemerovo	6.06.09	
200 m	24.94 Tula	0,3 14.06.05	
Long jump	6.18 Chelyabinsk	0,7 16.06.08	
	6.52w Kaunas	2,6 19.07.09	
Javelin throw	43.74 Szczecin	28.06.09	
800 m	2.11.82 Sochi	29.05.09	
1st day	3.607 Kaunas	18.07.09	
2nd day	2.511 Kaunas	19.07.09	
Marathon(?)	2.41.10 Thessaaloniki (5a)	13.04.09	

Personal best heptathlon:	14.04 1.80 14.32 25.50 6.52 37.63 2.16.24
	973 978 815 841 1014 622 875
	973 1951 2766 3607 4621 5243 6118
Total points with personal best:	14.04 1.80 14.60 24.94 6.52 43.74 2.11.82
	973 978 834 892 1014 739 938
	973 1951 2785 3677 4691 5430 6368



Career:

5444	2) TULA	24.06.04 NCJ	14.56	1.70	12.51	25.24	5.82	28.74	2.15	93	1,9	0,3	-0,1
5427	10) GROSSETO	17.07.04 WCJ	14.36	1.62	12.76	25.17	5.68	32.14	2.15	35	1,7	-0,3	0,4
5614	2) SOCHI	18.05.05 RUSCUPJ	14.57	1.70	13.04	25.52	5.92	35.03	2.14	95	0,1		1,8
5786	7) TULA	15.06.05 NC	14.22	1.73	12.57	24.94	6.03	36.95	2.15	24	0,3	-0,3	-0,3
5644	2) TULA	3.07.05 NCJ	14.57	1.68	12.98	25.15	6.07	35.37	2.16	89	-0,4	0,4	1,1
5740	4) KAUNAS	24.07.05 ECJ	14.19	1.73	12.96	25.47	5.96	36.37	2.14	95	-2,0	-0,9	0,0
5461	2) SOCHI	27.05.06	14.61	1.70	12.05	25.46	5.80	34.92	2.18	48	-1,1	-1,1	-0,2
5565	3) TULA	23.07.06 NCJ	14.42	1.70	12.75	25.30	5.57	38.41	2.17	14	-1,7	-0,2	0,2
5767	3) SOCHI	27.05.07 U23	14.22	1.70	13.33	25.17	6.04	35.37	2.14	22			
5388	7) SOCHI	15.05.08 CUP	14.61	1.68	12.83	26.46	5.90	34.32	2.20	76	1,2	1,1	
5721	8) CHELYABINSK	16.06.08 NC	14.37	1.77	13.32	25.46	6.18	33.52	2.20	92	0,5	0,2	0,7
5542	3) VOLGOGRAD	20.09.08 NP	14.66	1.73	13.17	26.00	5.96	36.87	2.22	95	0,5	1,2	0,8
5834	8) DESENZANO	10.05.09 INVT	14.17	1.78	13.86	25.28	5.82	35.87	2.14	60	1,0	0,0	-0,7
5970	2) SOCHI	29.05.09	14.38	1.79	14.11	25.69	6.00	39.95	2.11	82	-0,1	-0,2	1,5
5940	6) SZCZECIN	28.06.09 EP	14.18	1.75	13.67	25.68	6.06	43.74	2.16	87	-1,0	-0,6	1,3
6118	3) KAUNAS	19.07.09 ECU23	14.04	1.80	14.32	25.50	6.52	37.63	2.16	24	-0,2	-1,7	2,6

Indoor

4034	1) KEMEROVO	18.12.04 RUSS. CJ	8.78	1.67	12.01	5.85	2.22	21					
4004	2) SUMY	15.02.06 V2J	8.96	1.71	12.60	5.69	2.24	58					
3921	1) KEMEROVO	23.12.06 J	9.01	1.68	13.24	5.54	2.27	23					
4054	5) KRASNODAR	30.01.07 NCU23	8.92	1.68	12.71	5.95	2.25	12					
4345	4) PENZA	4.02.09 NC	8.72	1.74	13.35	6.04	2.17	31					
4142	2) KEMEROVO	17.12.09	8.89	1.67	14.18	5.82	2.22	51					
4210	3) MSKVA	17.01.10 MSK-CH	8.80	1.70	14.32	5.95	2.25	21					