

25th International Meeting of Combined Events

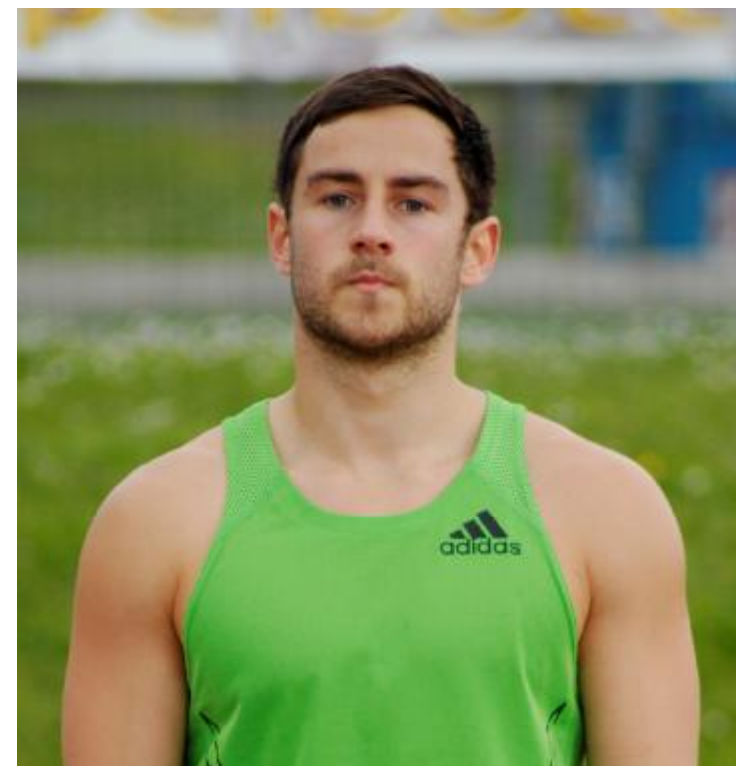
I.A.A.F. WORLD COMBINED EVENTS CHALLENGE 2012

TROFEO "CITTA' DI DESENZANO DEL GARDA"(BS) – ITALY

Desenzano del Garda (Italy) "F. Ghizzi" Stadium - May 5th - 6th, 2012

Name: **Ashley BRYANT**
 Country: Great Britain & N. I.
 Date of birth: 17 May 1991
 Place of birth: West Hammersmith
 Club: Windsor Slough Eton & Hounslow/Brunel Univ.
 Coach: Ian Grant
 Height: 1,80
 Weight: 82

Personal best:		Best Results:	
Decathlon	7.789 Shenzhen	18.08.11	World junior championships: 16 2010
100 m.	11.02 Moncton	1,3 20.07.10	European junior championships: 10 2009
	10.82w Lee Valley	3,9 14.04.12	Universiade 5 2011
Long jump	7.48 Shenzhen	0,3 17.08.11	European cup: 3b 2011
Shot put	13.54 Desenzano		5.05.12
High jump	1.89 Bedford		4.06.11
400 m.	48.42 Desenzano		5.05.12
110 m. hurdles	14.35 Desenzano	1,9 8.05.11	
Discus throw	40.70 Desenzano		6.05.12
Pole vault	4.60 Bressanone		3.07.11
Javelin throw	67.16 Street		28.04.09
1.500 m.	4.39.51 Shenzhen		18.08.11
200 m.	22.44i Sheffield		16.02.11



Ashley BRYANT

Career:

Junior impl.

4364	4) ETON	24.09.06	11.9	6.32	11.77	1.65	dnf	15.8	34.99	2.90	34.68	dnf						
6276	2) MILTON KEYNES	30.09.07	11.7	6.46	12.28	1.74	51.7	15.6	36.49	3.70	52.34	5.12.4	-0,3	2,9	-1,3			
6549	3) STREET	27.04.08	11.36	6.60	10.64	1.78	50.58	15.44	39.66	4.20	35.92	4.50.71	3,7		0,0			
6871	1) READING	29.06.08	11.1	6.71	11.50	1.80	50.3	15.2	39.45	4.10	52.48	4.49.4						
6873	2) ASHFORD	27.07.08 V3J	11.37	6.85	11.30	1.82	50.08	15.17	38.02	4.00	56.28	5.02.75	0,9	0,6	-0,5			
6821	2) BIRMINGHAM	21.09.08	11.65	6.88	12.51	1.83	49.82	15.49	38.58	3.60	56.11	4.55.25	-0,7	2,0	0,0			
6983	2) STREET	26.04.09	11.47	6.75	12.48	1.66	50.91	15.38	39.35	4.00	67.16	4.48.19	2,4	1,4	-0,2			
7069	1) WOODFORD	17.05.09	11.40	6.96	12.62	1.88	50.47	14.99	37.52	3.89	59.46	4.57.15	2,0	3,5	1,4			
7267	3) STOKE ON TRENT	14.06.09 NCJ	11.43	6.76	13.31	1.84	49.76	14.95	38.09	4.01	65.52	4.45.32	2,5	2,3	2,3			
5975	3) KINGSTON	28.06.09	11.62	6.75	12.97	1.80	59.64	15.17	37.80	4.10	56.17	dnf	-1,5		-0,1			
7193	10) NOVI SAD	24.07.09 ECJ	11.50	6.59	12.87	1.80	50.01	14.96	39.72	4.10	64.21	4.42.83	-0,5	0,0	-2,0			
7219	1) BEDFORD	20.09.09 J	11.44	6.98	13.79	1.84	50.59	15.09	40.48	4.11	61.13	4.59.00	-0,1	1,6	-0,4			
7248	1) WOODFORD	16.05.10 ESSEXCH	11.46	6.90	13.99	1.82	51.20	14.77	40.79	4.13	62.24	4.56.44	0,5	1,6	2,7			
7342	1) BEDFORD	6.06.10 ENG CHJ	11.34	6.98	13.96	1.83	49.64	14.62	34.37	4.16	62.27	4.43.92	-0,7	2,3	1,2			
6956	16) MONCTON	21.07.10 WCJ	11.02	7.11	13.56	nm	49.53	14.38	41.66	4.20	65.00	4.47.86	1,3	-1,6	0,2			

7194	4) MANCHESTER	15.08.10 N.W.	11.02	7.04	12.39	1.80	49.80	15.37	36.56	4.30	62.38	5.00.33	2,5	0,9	0,0			
7586	6) DESENZANO	8.05.11 INVT	11.26	7.12	12.63	1.86	48.77	14.35	39.67	4.45	65.85	4.55.83	-0,2	-0,7	1,9			
7638	2) BEDFORD	5.06.11 ENG. CH.	11.13	7.15	12.85	1.89	48.61	14.89	39.89	4.53	62.31	4.45.57	-0,2	3,2	1,4			
7747	3) BRESSANONE	3.07.11 EP-B	11.07	7.46	12.65	1.86	48.47	14.75	36.28	4.60	66.00	4.40.42	0,8	2,4	1,4			
7789	5) SHENZHEN	18.08.11 WUG	11.08	7.48	13.32	1.89	48.59	14.71	40.46	4.30	64.08	4.39.51	0,1	0,3	-0,5			
7689	2) DESENZANO	6.05.12 INVT	11.10	7.12	13.54	1.77	48.42	14.49	40.70	4.55	64.60	4.45.72	0,0	0,3	0,6			

Indoor

Junior impl.

5050	3) SHEFFIELD	10.01.10 RCJ	7.45	6.74	13.69	1.81	8.61	4.20	2.54.79									
5381	4) BOMPAS	7.03.10 V FRA J	7.26	6.99	13.59	1.84	8.33	4.45	2.49.80									

5383	3) SHEFFIELD	6.03.11 U23	7.23	7.01	13.34	1.89	8.37	4.60	2.57.33									
5422	3) CARDIFF	25.03.12 V2	7.21	7.15	13.42	1.81	8.34	4.45	2.47.65									